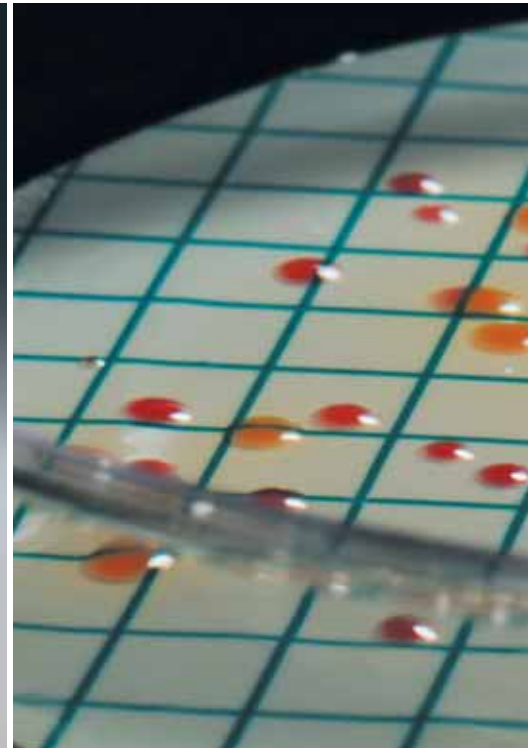




sartorius stedim
biotech

Microbiological Testing of Foods, Beverages and Pharmaceuticals



turning science into solutions



Introduction

The consumer's steadily growing requirements for the quality and the longer shelf life of foods and beverages must be met by the manufacturer. He cannot limit quality assurance to inspection of the final product alone, such as a bottled beverage or a prepared food product. Instead, he continuously must inspect incoming raw materials and perform in-process quality control tests throughout production if he wants to avoid later losses and customer complaints. Microbiological and aseptic testing play a significant role in such quality assurance.

In the soft drink industry the microbiological and hygienic quality including the biological stability of the products are important criteria for their assessment. The reason: just a few microbes are often all it takes to spoil large quantities of a beverage.

Although the explosive technological development has reduced the risk of contamination by spoilage microbes, the issue of shelf life has taken on new dimensions as a result of the enormous production output now possible. Quality control of bottling and filling, in terms of chemical and, above all, biological stability, must be adapted to this development by state-of-the-art test methods.

The requirements for a practical microbiological test method are that it permit quantitative and reproducible detection of trace contamination and that it can be performed efficiently and economically under routine conditions. These requirements are fulfilled optimally by the membrane filter method.

The principle of this method is based on the concentration of microorganisms from relatively large samples on the surface of the membrane filter, and on culturing these microbes on a nutrient pad or an agar culture medium.

Contents

4	The Membrane Filter Method
6	Nutrient Pad Sets
7	User Benefits
8	General Directions
9	Description and Typical Growth Evaluation Results
9	1. Total colony count
11	2. E. coli and coliforms, Enterobacteria
13	3. Faecal bacteria
14	4. Non-faecal, pathogenic bacteria
14	5. Yeasts and molds
16	6. Product-spoiling microorganisms
18	Troubleshooting Guide
19	Membrane Filters for Use on Agar Plates or on Absorbent Pads
20	Typical Application Examples
21	Growth comparison
22	Accessories
24	References and Technical Data
25	Test Strains
26	Reference Guide
27	Notes



The Membrane Filter Method

Description

The Membrane Filter Method

A membrane filter of the appropriate pore size is placed in a filter holder, and the sample is filtered. In this process microorganisms in the test sample are retained on the filter surface by the screening action of the membrane filter.

Growth inhibitors can be removed by flushing the membrane with sterile NaCl solution after filtration. Afterwards, the membrane filter is placed on a culture medium and incubated.

For the Monitor MF-Method the monitor is ready to use due to a pre-assembled membrane and pad inside.

The nutrient media is added from the top and sucked into the pad by a short vacuum (< 1 sec.) After removal of the funnel the lid and the base fit to a petri dish.

Nutrients and metabolites are exchanged through the pore system of the membrane filter. Colonies, which have developed on the membrane filter surface during incubation, are counted and related to the sample volume.

The advantages:

- Proven accuracy
Compared with the direct method, considerably larger sample volumes can be tested. This concentration effect increases the accuracy of microbial detection.
- Quantitative results
The visible colonies can be related directly to the sample volume.
- Documentation
The membrane filter with colony growth can be filed as a permanent record of the test.

No inhibitors

Inhibitors, such as essential oils or disinfectants, can be flushed from the membrane filter after filtration.

GMP quality

Sartorius Stedim Biotech Membrane Filters are manufactured under GMP conditions, ensuring consistent quality and high reproducibility from batch to batch and within each batch.

The Culture Media

Microorganisms can be detected by different methods.

Methods involving culturing techniques and the microscope are used to detect microbes, whereas biochemical and serological techniques are commonly applied to differentiate among such organisms.

For detecting microorganisms in cultures, liquid and solid culture media are employed. Microorganisms are concentrated by growth in or on these culture media.

Quantitative detection is only possible with solid culture media because the individually developing colonies can be evaluated and counted on the surface.

The following culture media can be used for microbiological testing:

- Nutrient Pad Sets

Nutrient Pad Sets definitely optimize the membrane filter method.

They standardize microbiological test procedures, making them much more efficient.

The simplify laboratory work.

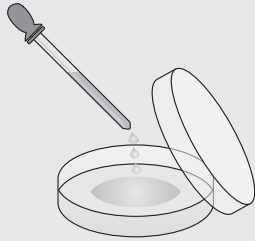
They help to save time and money.

- Absorbent pads to be wetted with culture media
- Culture media with agar or gelatin as the solidifying agent

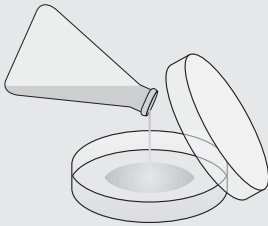
The nutrient Pad Sets are described on the following pages and certainly offer the most convenient way to use the membrane filter method.

Direct Method

The test sample is pipetted into a petri dish...



... then mixed with the culture medium and incubated

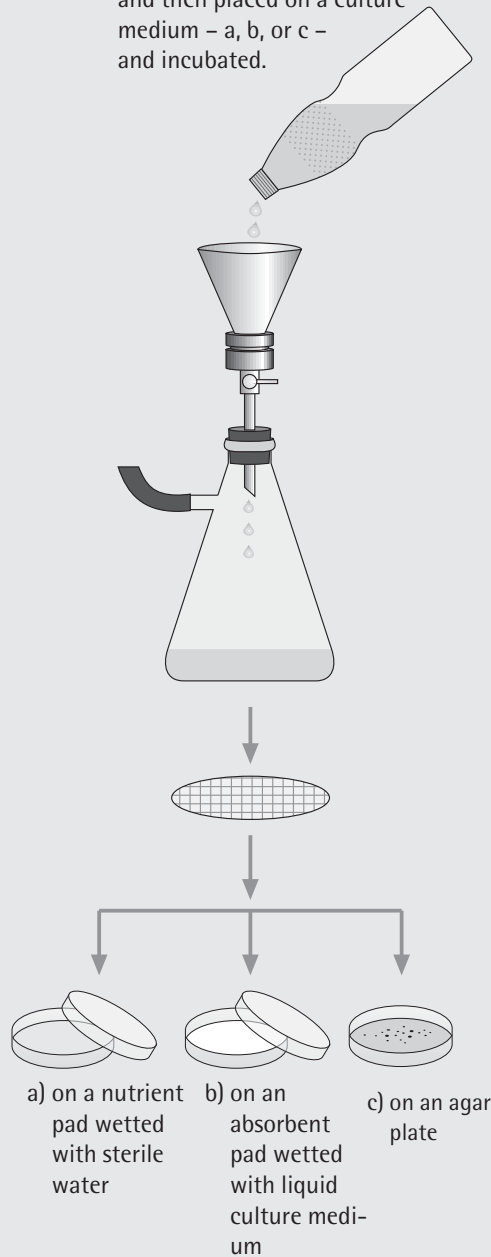


Membrane Filter Method

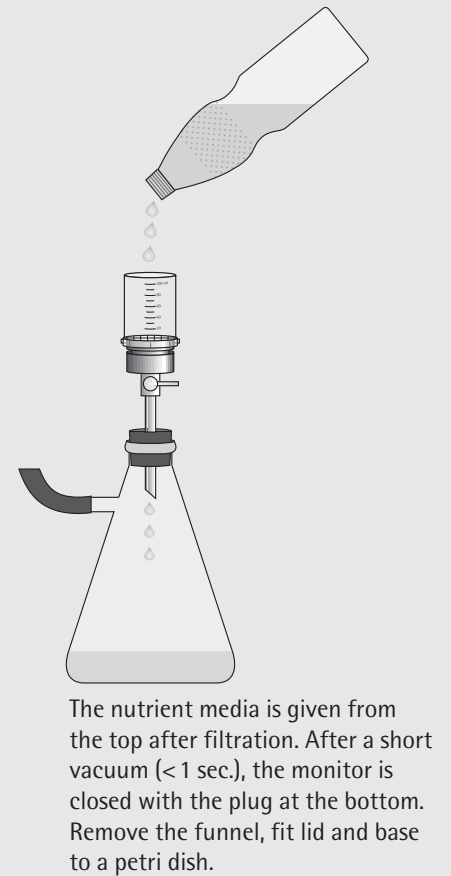
The test sample is filtered through a membrane filter

Standard MF method

The membrane filter is rinsed and then placed on a culture medium – a, b, or c – and incubated.



Monitor MF method



For further information on Sartorius Stedim Biotech Biosart 100 Monitors, please refer to the publications SM-1013-e

Nutrient Pad Sets



Sartorius Stedim Biotech Nutrient Pad Sets have been used successfully in the membrane filter method for 20 years. Practical and easy to handle, they reduce labor and simplify many microbiological testing procedures.

Nutrient pads are sterile, dehydrated culture media. Once they are moistened with 3.0–3.5 ml of sterile and demineralized (or distilled) water they are ready to use immediately.

The level of moisture is optimal when an excess ring of water surrounding the pad is visible.

All Nutrient Pad Set types are supplied with the appropriate membrane filters, which are also presterilized and individually packaged. The membrane filters tailored to meet the special requirements of microbial detection are available with 47 mm or 50 mm diameters.

Nutrient pad sets (NPS) are continuously enhanced as part of our development program to adapt our products to changing application requirements. Besides the new NPS types, we have also updated our packaging design. The standard NPS box contains 100 sterile nutrient pads, each of which is individually inserted in a petri dish and sterilized. Ten each of these petri dishes are sealed in an aluminum bag. This special packaging in bags protects the sensitive formula constituents of the nutrient pads during transport and storage from fluctuations in humidity and temperature. As a result, it guarantees the high quality of our NPS throughout their entire shelf life ranging from 18 to 24 months.

How to Use Nutrient Pad Sets

It's so easy to use Nutrient Pad Sets: NPS and go



Desinfect the working area



Cut open the packaging and remove the number of nutrient pads needed



Wet the nutrient pads with 3.5 ml sterile and distilled or demineralized water



Open the vacuum tap.
Flame the frit and close the vacuum tap



Flame the stainless steel funnel



Open the vacuum tap and flame inside the funnel. Close the vacuum tap and flame the lid.

User Benefits

Economical

Eliminates time-consuming and labor-intensive preparation of culture media (sterilization and cleaning, among others).

– After wetting with 3,5 ml distilled water NPS are ready to use: NPS and go

Simple to use

Nutrient Pad Sets can also be used in laboratories which do not have extensive microbiological equipment. Sterile water for moistening the pads can be added easily with a Sartorius Stedim Biotech Dosing Syringe and an attached Syringe Filter Holder (0.2 µm) or with an ampoule with sterile water.

– Everyone can use NPS

Consistent quality

During manufacture, each type of Nutrient Pad Set is compared with the corresponding agar medium with respect to their growth-promoting properties. This QA procedure ensures consistent quality and reproducible results.

– NPS are validated. In comparison of agar which is done within different deviations of amount and height NPS give always constant results

Trouble-free storage

Nutrient Pad Sets have a shelf life of 18 to at least 24 months at room temperature.

– No waste or overproduction of prepared agar media

Highly versatile

Nutrient Pad Sets can be modified by additives in the solution used to wet them; for example, Wort or Orange Serum Nutrient Pads when wetted with 5–8% ethanol promote the growth of acetic-acid bacteria.

– Advanced system



Flame the tweezers, shortly cool down



Take off the membrane



Place the filter on the frit of the filter holder. In case of a yellow protective disc make sure to discard it before assembling the funnel or the top part of the filter holder.



Filter the sample. Then rinse the inside of the filter holder with sterile water or physiological saline solution



Place the filter on the pad without entrapping air bubbles



Incubate the nutrient pad in the petri dish with the lid right side up (do not invert)

General Directions



General Procedure.

To obtain reliable results for microbiological tests, it is necessary to work under conditions that rule out contamination by microorganisms which distort such results.

That is why you should work near the flame of a Bunsen burner in a room protected from drafts. Before beginning with the actual procedure, spray or wash down your work area with a disinfectant (e.g., 70% alcohol).

Before use, filter holders, forceps and scissors should be sterilized by one of the standard methods, such as flaming for routine tests.

How to Handle Microorganisms

Microorganism cultures must always be handled as carefully as if they contained pathogens.

Working with microorganisms is not dangerous if the following safety rules are observed:

Wash your hands thoroughly before and after working in a laboratory.

Do not eat or drink in a laboratory.

Do not touch bacterial matter with your hands.

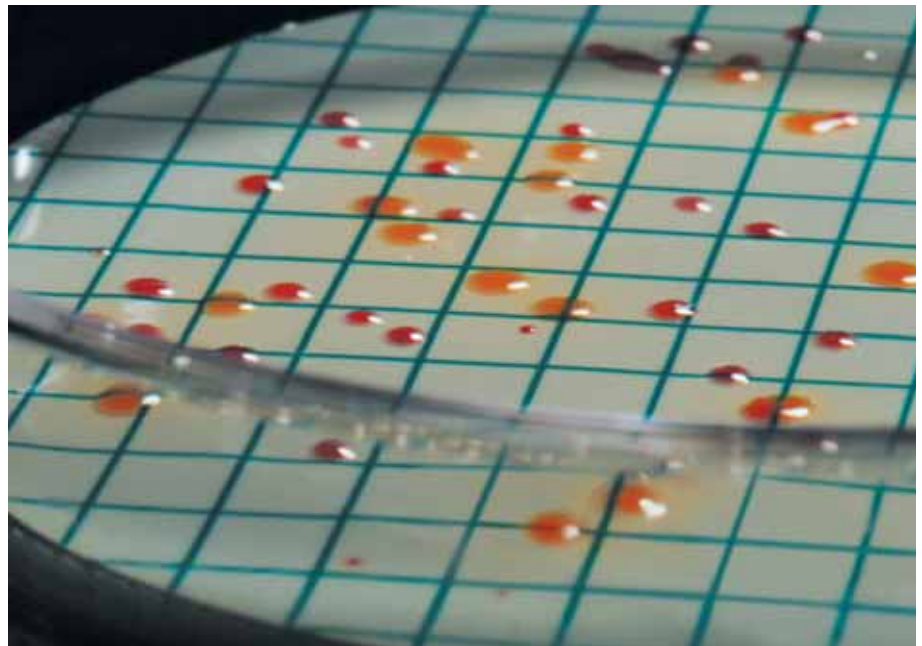
Never pipet bacteria suspensions with your mouth. Always use mechanical aids for pipetting (e.g., Peleus ball).

Before and after use, inoculating loops and wires must be sterilized by flaming until they glow red-hot.

All laboratory equipment which has come in contact with bacteria must be sterilized.

To protect people and animals from contagious diseases or poisoning, living cultures have to be destroyed before cleansing or disposing of the containers. One method is to coat them thoroughly with disinfectants or to autoclave them in suitable containers.

Sartorius Stedim Biotech Nutrient Pads are participating regularly at official inter-laboratory tests for the microbiological investigation of drinking water according to the New European Drinking Water Guideline. This certificate of the "Niedersächsischen Landesgesundheitsamt" in Aurich (public health agency, Lower Saxony) quote a reference for the passed tests with good success.



Description and Typical Growth Evaluation Results

1. Total colony count

Caso NPS
Type 14063

Soybean-Casein Digest medium for isolating microorganisms and for determining the total CfU count. Dehydrated culture medium for cultivating microorganisms in pharmaceuticals, cosmetics, raw materials, water (general quality), waste water, foods and other products.

References:

APHA (dairy), APHA (food), APHA (water), AOAC, DAB, EG 98/83, EP, FDA, IDF, ISO 7704, ISO 8199, ISO 9308-1 [1990], ISO 9308-1 [2001], USDA, USP and Internal SOPs.

Incubation Conditions:

up to 5 days at 32.5±2.5° C

Evaluation and Typical Results:

Predominantly bacteria of different sizes, shapes and colors. Remarks: Depending on the microbes to be detected, this medium can be converted into a selective one by mixing the wetting liquid with additives before moistening the pad. When 10% serum is added to the wetting liquid a number of fastidious pathogenic bacteria like the genera Pneumococcus, Neisseria, Streptococcus, Corynebacterium, Erysipelothrix and Brucella are able to grow on the medium.

R2A NPS
Type 14084

Low nutrient medium for the enumeration of heterophilic organisms in treated potable water and highly purified water. The optimal growth medium for bacteria which have adapted to the particular living conditions of water low in nutrients. Dehydrated culture medium for cultivating microorganisms in water for pharmaceutical purpose, water (general quality), waste water and other products.

References:

APHA (water), EP, ISO 7704 and Internal SOPs.

Incubation Conditions:

48-72 h at 35±2 °C; 5-7 days at 20±2 °C

Evaluation and Typical Results:

Predominantly bacteria grow on this medium. Their colonies are of different size and color, most of them are white or colorless. Remarks: Stressed and chlorine-tolerant bacteria are stimulated by this medium in combination with lower incubation temperatures and longer incubation time.

Standard TTC NPS
Type 14055

Meat extract-peptone medium for determining the total CfU count; formulated following the "APHA (water)", 1998, and modified by the addition of TTC. Dehydrated culture medium for cultivating microorganisms in raw materials, water (general quality), waste water, beverages, beer, foods and other products.

References:

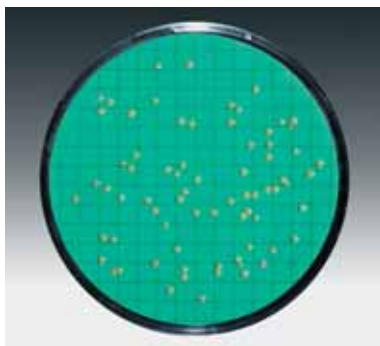
APHA (water), ISO 7704, VLB and Internal SOPs.

Incubation Conditions:

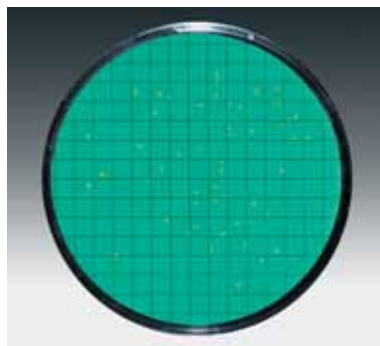
2-5 days at 30±2° C

Evaluation and Typical Results:

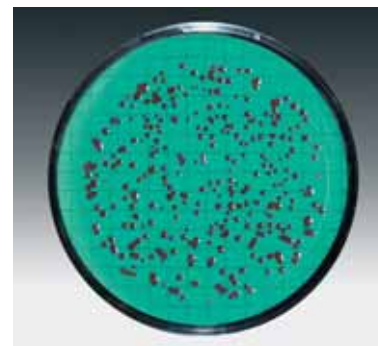
Predominantly bacteria grow on this medium. The majority of their colonies are stained red by TTC reduction.



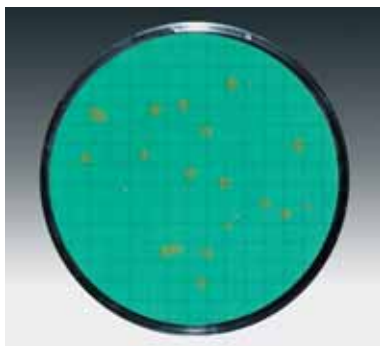
Staphylococcus aureus



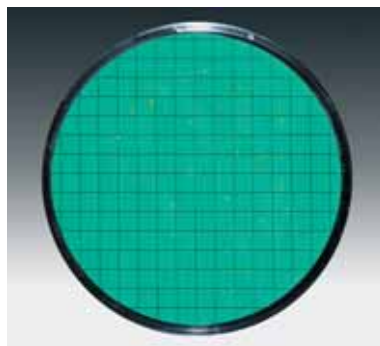
Escherichia coli



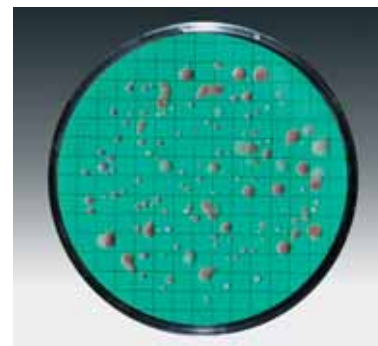
Bacillus subtilis



Mixed culture from process water



Mixed culture from water



Mixed culture from well water

1. Total colony count

Standard NPS Type 14064

Meat extract-peptone medium for determining the total CfU count; formulated following the "APHA (water)", 1998. Dehydrated culture medium for cultivating microorganisms in raw materials, water (general quality), waste water, beverages, beer, foods and other products.

References:

APHA (water), ISO 7704, VLB and Internal SOPs.

Incubation Conditions:

2–5 days at 30±2° C

Evaluation and Typical Results:

Predominantly bacteria grow on this medium. The morphology and color of their colonies vary.

NEW! TGE NPS Type 14076

Tryptone Glucose Extract medium for isolating microorganisms and for determining the total CfU count. Dehydrated culture medium for cultivating microorganisms in raw materials, water (general quality), waste water, beverages, soft drinks, concentrates, foods and other products.

References:

APHA (dairy), APHA (food), APHA (water), API, ISO 7704 and Internal SOPs.

Incubation Conditions:

2–5 days at 30±2° C

Evaluation and Typical Results:

On this medium predominantly colonies of bacteria grow that can have different size and colors.

NEW! Yeast Extract NPS Type 14090

For the detection of the total count of aerobic heterotrophic bacteria. Dehydrated culture medium for cultivating microorganisms in water (general quality) and other products.

References:

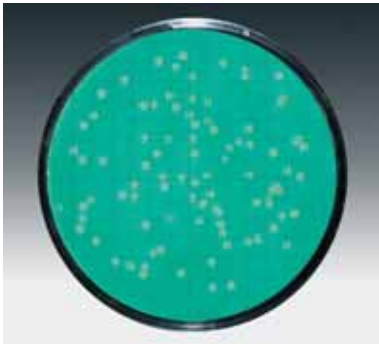
EG 98/83, HMSO, ISO 6222, ISO 7704, ISO 8199 and Internal SOPs.

Incubation Conditions:

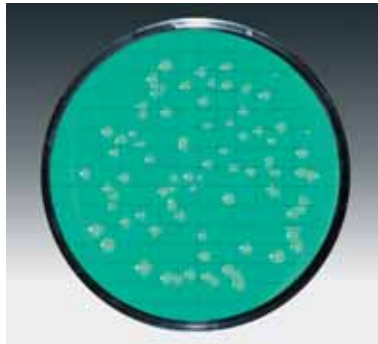
44±4 h at 36±2° C; 68±4h at 22±2° C

Evaluation and Typical Results:

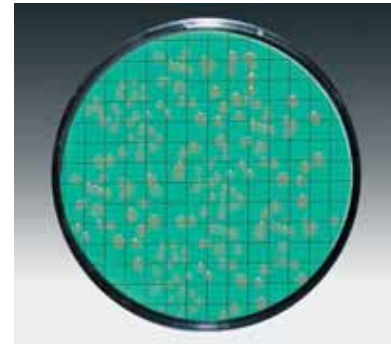
Predominantly bacteria grow on this medium. The majority of all colonies are colorless.



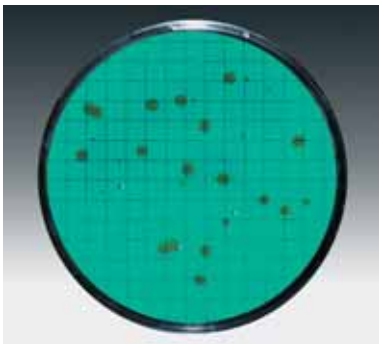
Escherichia coli



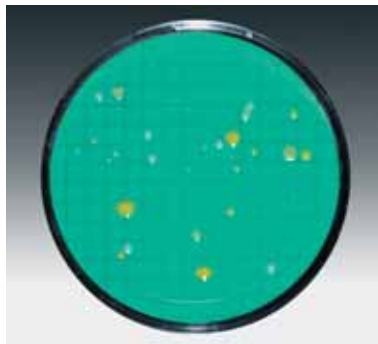
Escherichia coli



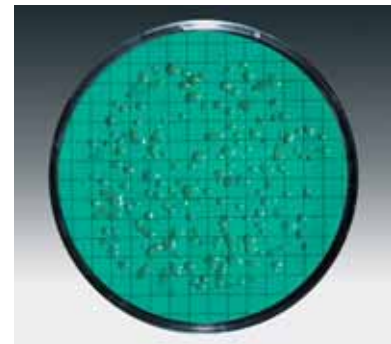
Escherichia coli



Mixed culture from drinking water



Mixed culture from water



Mixed culture from river water

2. E. coli and coliforms, Enterobacteria

Chromocult NPS

Type 14087

For the detection of total coliforms and *Escherichia coli*. Dehydrated culture medium for cultivating microorganisms in raw materials, water (general quality), waste water, beverages, foods and other products.

References:

ISO 7704, Journal Food Protection, ZenHyg (journal of hygiene) and Internal SOPs.

Incubation Conditions:

24 h at 36±1° C

Evaluation and Typical Results:

E. coli develops dark-blue to violet colonies, other coliforms red to pink colonies. Other gram-negative colonies are colorless, a few with β-Glucuronidase activity are light blue to turquoise. Remarks: To confirm *E. coli* give one drop of Kovacs indole reagent on each dark blue colony. Cherry red color after a few seconds is a positive reaction.

ECD NPS

Type 14082

Selective culture medium for detecting and identifying *Escherichia coli*. Bile salt inhibits the accompanying flora of microbes not living in the intestine. Dehydrated culture medium for cultivating microorganisms in raw materials, water (general quality), waste water, beverages, foods and other products.

References:

APHA (water), DIN 10110, EG 98/83, ISO 7704, ISO 8199, ISO 9308-1 [2001], LMBG, USDA and Internal SOPs.

Incubation Conditions:

18–24 h at 37±1° C or acc. to ISO 9308-1

Evaluation and Typical Results:

Colonies that show light blue fluorescence under UV light indicate *E. coli*; confirmation with a drop of KOVÁCS indole reagent is required, a positive reaction is shown as a cherry color after a few seconds. Remarks: This medium can be used for the rapid detection of *Escherichia coli* acc. to ISO 9308-1.

Endo NPS

Type 14053

Selective medium for detecting and enumerating *E. coli* and coliform bacteria. Dehydrated culture medium for cultivating microorganisms in raw materials, water (general quality), natural water, waste water, beverages, soft drinks, concentrates, fruit juice, sugar, sugar products, foods and other products.

References:

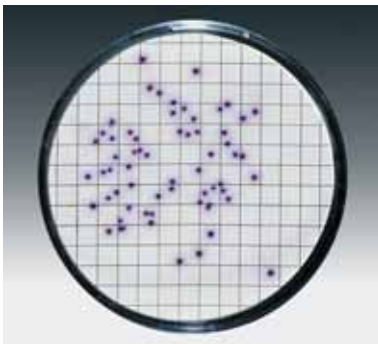
APHA (dairy), APHA (food), APHA (water), DGHM, ISO 7704, ISO 9308-1 [1990], MNO, USDA and Internal SOPs.

Incubation Conditions:

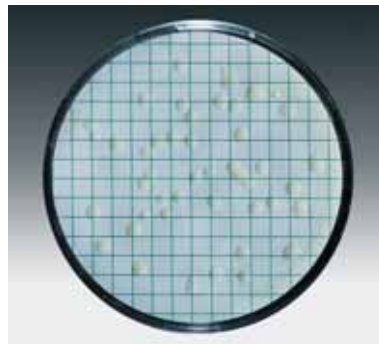
24±2 h at 36±2° C or acc. to ISO 9308-1 [1990]

Evaluation and Typical Results:

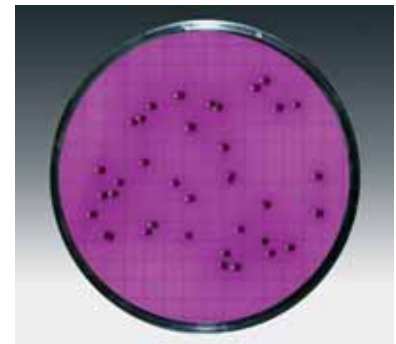
E. coli form red colonies with a metallic sheen and a red dot at the underside of the membrane. Other coliforms grow as dark to light red colonies without metallic sheen. Colorless colonies of lactose-negative bacteria are not counted.



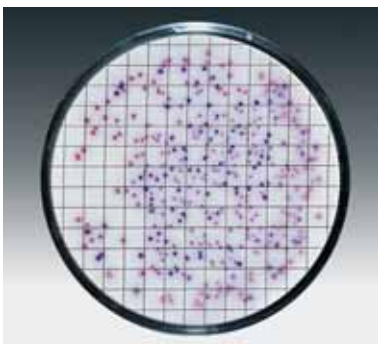
Escherichia coli



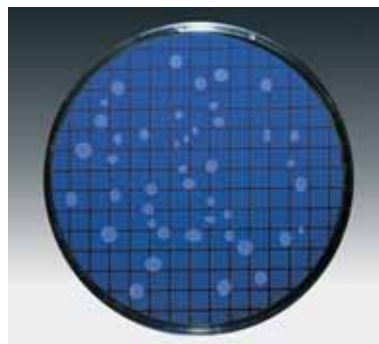
Escherichia coli



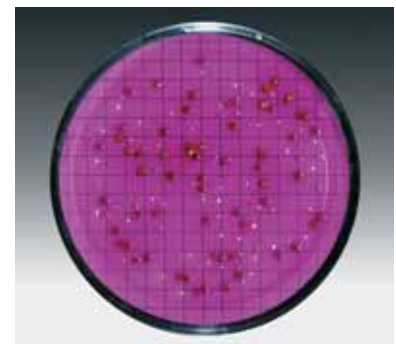
Escherichia coli



Mixed culture from water



E. coli colonies fluorescence in UV light



E. coli and coliforms from river water

2. E. coli and coliforms, Enterobacteria

MacConkey NPS

Type 14097

For the isolation and differentiation of coliform bacteria and other enterobacteriaceae. Dehydrated culture medium for cultivating microorganisms in pharmaceuticals, cosmetics, raw materials, water (general quality), natural water, waste water, beverages, soft drinks, concentrates, fruit juice, foods and other products.

References:

APHA (dairy), APHA (food), APHA (water), AOAC, DAB, DIN 38411, DGHM, EP, ISO 7704, LMBG, MNO, USDA, USP and Internal SOPs.

Incubation Conditions:

18–24 h at 36±2° C

Evaluation and Typical Results:

Escherichia coli forms large red or reddish colonies, coliform microbes form large pink, sometimes slimy colonies, lactose-negative enterobacteria form colorless colonies. Gram-positive microbes are inhibited.

m FC NPS

Type 14068

For the detection of E. coli and faecal coliform bacteria according to Geldreich et al. Dehydrated culture medium for cultivating microorganisms in raw materials, water (general quality), waste water, beverages, foods and other products.

References:

APHA (food), APHA (water), AOAC, EPA, FDA, ISO 7704, ISO 9308-1 [1990], USDA and Internal SOPs.

Incubation Conditions:

20±4 h at 36±2° C (44±1° C water bath)

Evaluation and Typical Results:

E. coli and coliform bacteria form blue colonies with a blue surrounding. This color is dark blue at faecal coliforms with strong lactose fermentation and lighter blue for non-faecal coliforms with weaker lactose fermentation. Lactose-negative bacteria grow with different colors and are not evaluated. Remarks: High incubation temperatures largely suppress the non-faecal coliforms.

Teepol NPS

Type 14067

Lauryl Sulphate medium for the detection of E. coli and faecal coliform bacteria according to Burman, N.P. (1967). Dehydrated culture medium for cultivating microorganisms in water (general quality), waste water, beverages, foods and other products.

References:

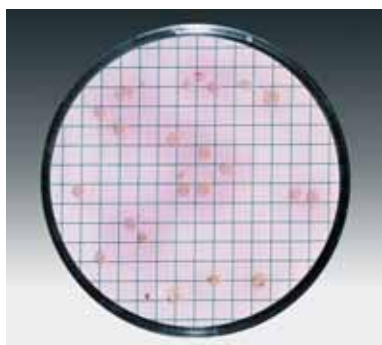
AFNOR, APHA (water), BS, FDA, ISO 7704, ISO 9308-1 [1990], USDA and Internal SOPs.

Incubation Conditions:

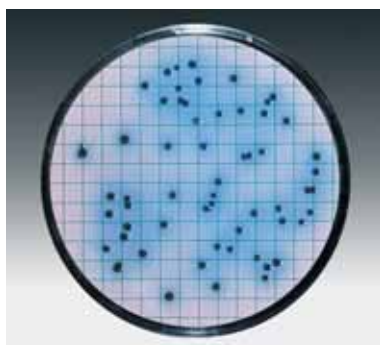
18–24 h at 36±1° C

Evaluation and Typical Results:

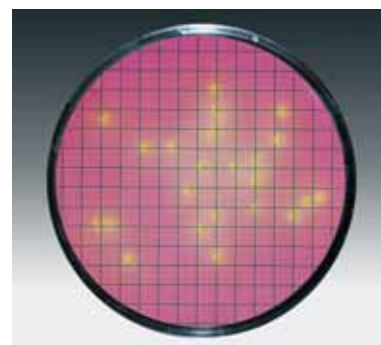
E. coli and coliform bacteria form 1–2 mm diameter yellow colonies surrounded by a yellow zone. Non-lactose fermenting bacteria develop red or colorless colonies without yellow zone.



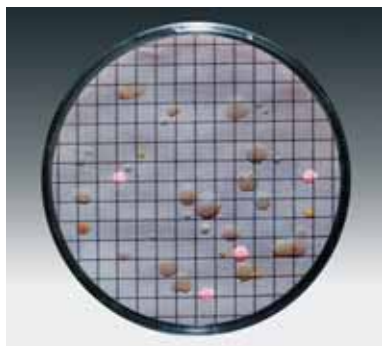
Escherichia coli



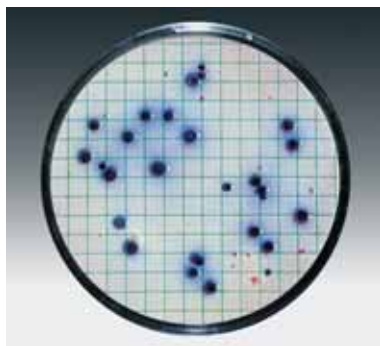
Escherichia coli



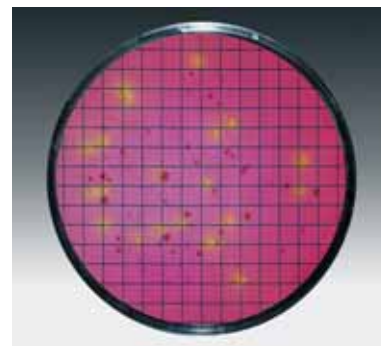
Escherichia coli



E. coli and coliforms from river water



E. coli and coliforms from waste water



E. coli and coliforms from waste water

3. Other faecal bacteria

Tergitol TTC NPS Type 14056

Selective and differential medium for the detection and enumeration of coliform bacteria and *E. coli* according to Pollard; modified acc. to Chapman. Dehydrated culture medium for cultivating microorganisms in raw materials, water (general quality), waste water, beverages, foods and other products.

References:

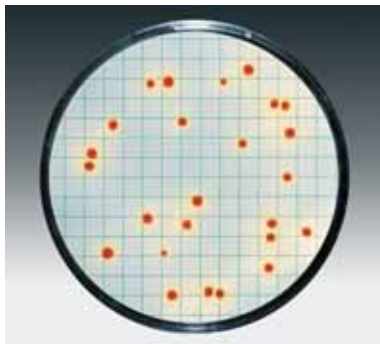
APHA (food), EG 98/83, ISO 7704, ISO 8199, ISO 9308-1 [1990], ISO 9308-1 [2001] and Internal SOPs.

Incubation Conditions:

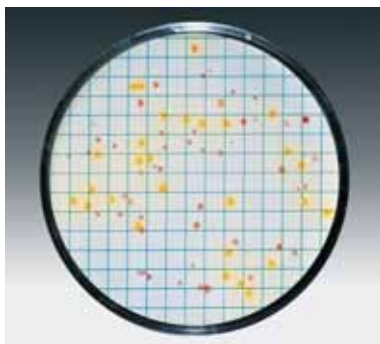
21±3 h at 36±2° C

Evaluation and Typical Results:

E. coli forms yellow colonies with a yellow surrounding, *Enterobacter* orange colonies with a small yellow surrounding. Coliform colonies are red and have a yellow dot under the membrane filter. According to ISO 9308-1 all colonies that show yellow color under the membrane filter are counted as positive. Remarks: Tergitol 7 inhibits Gram positive colonies and minimizes the swarming of *Proteus*.



Escherichia coli



E. coli and coliforms from waste water

Azide NPS Type 14051

For the detection and enumeration of intestinal enterococci according to Slanetz and Bartley. Dehydrated culture medium for cultivating microorganisms in raw materials, water (general quality), natural water, waste water, beverages, foods and other products.

References:

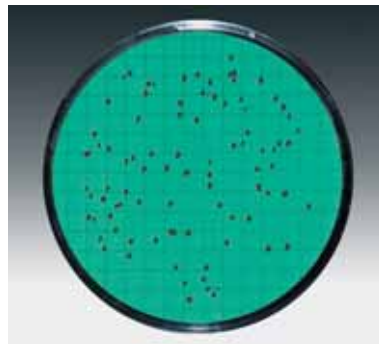
APHA (food), APHA (water), EG 98/83, HMSO, ISO 7704, ISO 7899-2, ISO 8199, LMBG, MNO and Internal SOPs.

Incubation Conditions:

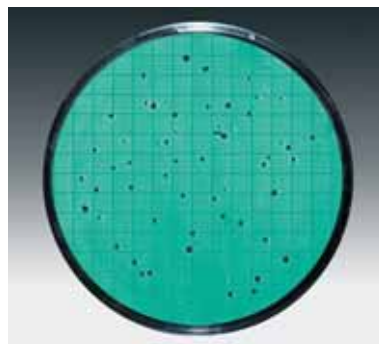
44±4 h at 36±2° C

Evaluation and Typical Results:

Enterococci form red, pink or reddish brown colonies with a diameter of 0.5–2 mm. Remarks: Enterococci are considered to be indicator organisms of faecal contamination. They are less sensitive to chemical effects than are *E. coli* organisms and are therefore longer detectable, for instance in waste water and in chlorinated water.



Enterococcus faecalis



Enterococci from waste water

Bismuth Sulphite NPS Type 14057

Selective culture medium according to Wilson and Blair for isolating *Salmonella typhii* and other salmonellae. Dehydrated culture medium for cultivating microorganisms in pharmaceuticals, cosmetics, raw materials, water (general quality), waste water, foods and other products.

References:

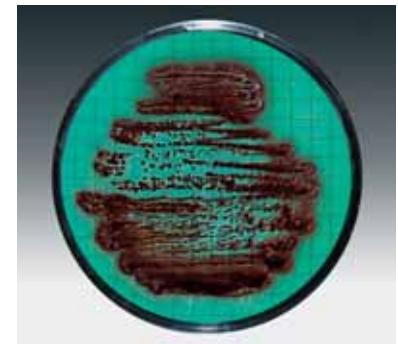
AFNOR, APHA (dairy), APHA (food), AOAC, DGHM, FDA, HMSO, ISO 6579 [1981], ISO 7704, USDA, USP and Internal SOPs.

Incubation Conditions:

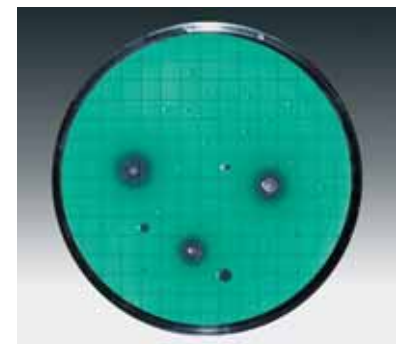
up to 48 h at 36±2° C

Evaluation and Typical Results:

Most salmonellae form light colored colonies with brown to black centers surrounded by a black zone with a metallic sheen ("fish eye"). Some *Salmonella* species develop uniformly dark brown to black colonies which may lack the typical zone. Remarks: If a very slight contamination with salmonellae is suspected, prepare a selective enrichment culture and subsequently streak the sample with an inoculation loop on a membrane filter that has been placed on the pre-wetted NPS.



Salmonella typhosa, streak



Salmonellae from waste water

4. Non-faecal, pathogenic bacteria

Cetrimide NPS Type 14075

For the detection and enumeration of *Pseudomonas aeruginosa* according to Lowbury. Dehydrated culture medium for cultivating microorganisms in pharmaceuticals, cosmetics, raw materials, water (general quality), waste water, foods and other products.

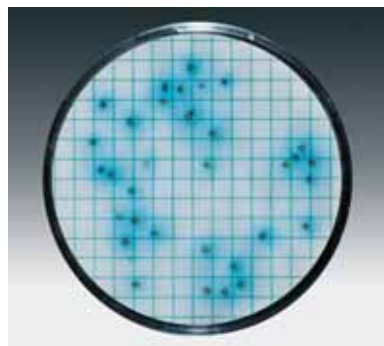
References:

APHA (water), AOAC, ASM, DIN 38411, EG 98/83, EP, FDA, ISO 7704, ISO 8199, EN 12780, USP and Internal SOPs.

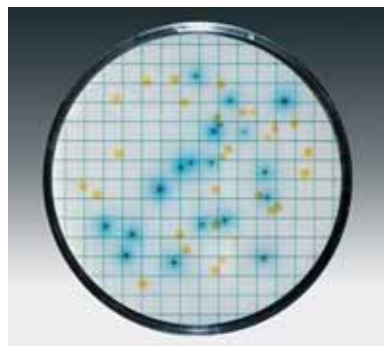
Incubation Conditions:
48 ± 4 h at 37 ± 1°C

Evaluation and Typical Results:

Pseudomonas aeruginosa forms blue, blue-green or yellow-green colonies with 1–2 mm diameter and blue zones. The colonies produce pyocyanin and fluorescein and show fluorescence in UV-light. Other *Pseudomonads* develop colonies with different colors. Remarks: Further tests are necessary for definitive identification of *Ps. aeruginosa*.



Pseudomonas aeruginosa



Mixed culture with *Pseudomonas aeruginosa*

Chapman NPS Type 14074

Mannitol salt medium according to Chapman, modified for detecting and isolating pathogenic *Staphylococci*. Dehydrated culture medium for cultivating microorganisms in pharmaceuticals, cosmetics, raw materials, water (general quality), waste water, foods and other products.

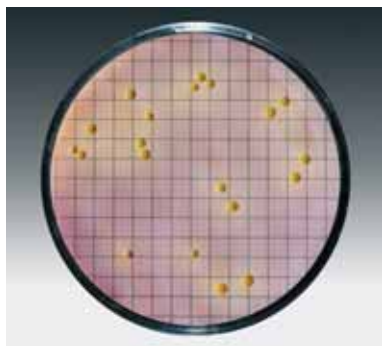
References:

APHA (food), AOAC, DGHM, FDA, HMSO, ISO 7704, USP and Internal SOPs.

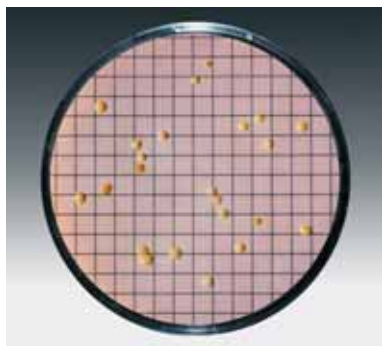
Incubation Conditions:
up to 3 days at 36 ± 2°C

Evaluation and Typical Results:

Staphylococcus aureus forms yellow colonies with a yellow surrounding (mannitol-positive). Other *Staphylococci* grow without zones of color change. Most other bacteria are inhibited.



Staphylococcus aureus



Mixed culture of staphylococci

5. Yeasts and molds

Lysine NPS Type 14061

Selective medium for isolating and enumerating "wild yeasts" in breweries according to Morris and Eddy. Dehydrated culture medium for cultivating microorganisms in beer and other products.

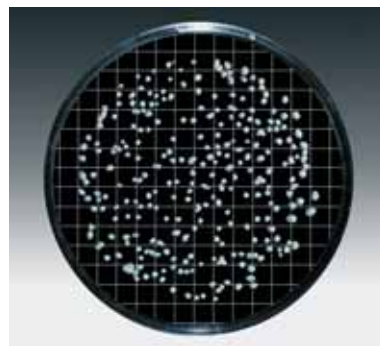
References:

Journal Institute of Brewing, VLB and Internal SOPs.

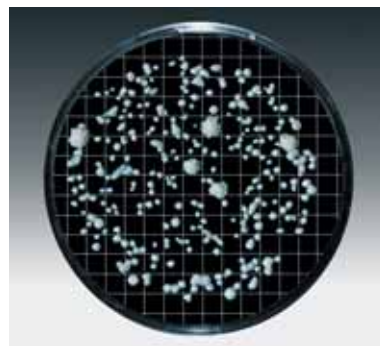
Incubation Conditions:
2–5 days at 25–28°C

Evaluation and Typical Results:

Only "wild yeasts" (not belonging to the genus *Saccharomyces*) which utilize lysine as sole source of nitrogen grow on this medium, they form white or cream colored colonies; brewery culture yeasts grow not at all or very poorly.



Torulopsis spec.



"Wild yeasts" from lager beer

5. Yeasts and molds

Malt Extract NPS

Type 14086

For the isolation and enumeration of yeasts and molds. Dehydrated culture medium for cultivating microorganisms in beverages, wine, soft drinks, concentrates, fruit juice, foods and other products.

References:

APHA (food), AOAC, IFU and Internal SOPs.

Incubation Conditions:

up to 3 days at 25±2° C or 7 days at 30±2° C

Evaluation and Typical Results:

Yeasts normally develop smooth white, rarely colored colonies. Molds generally form velvety or fluffy, cotton-like colonies that are white during the early growth phase and later, after conidiospore formation, of various colors. Remarks: The low pH of this medium suppresses the growth of most bacteria. This medium is available with two different types of membrane filters.

Sabouraud NPS

Type 14069

For the cultivation and enumeration of yeasts and molds. Dehydrated culture medium for cultivating microorganisms in pharmaceuticals, cosmetics, raw materials, water (general quality), waste water and other products.

References:

APHA (food), AOAC, EP, USP and Internal SOPs.

Incubation Conditions:

up to 5 days at 20–25° C

Evaluation and Typical Results:

Yeasts usually develop smooth white or colored colonies. Molds form velvety or fluffy, cotton-like colonies that are white in the early growth phase and may take various colors after conidiospore production.

Schaufus Pottinger

(m Green yeast and mold) NPS

Type 14070; 14072; 14080; 14083; 14091.

M Green Yeast and Mold medium for the detection of yeasts and molds according to Schaufus and Pottinger. Dehydrated culture medium for cultivating microorganisms in wine, soft drinks, concentrates, sugar, sugar products and other products.

References:

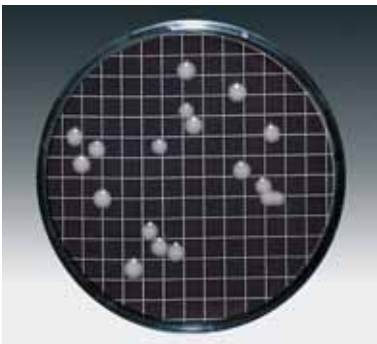
Internal SOPs.

Incubation Conditions:

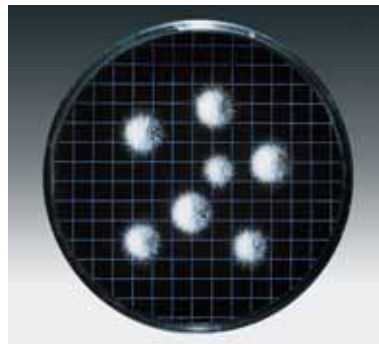
2–7 days at 25–30° C

Evaluation and Typical Results:

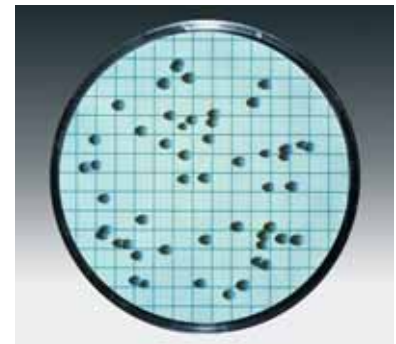
Molds develop velvety or fluffy whitish or greenish colonies which can get various colors after conidiospore production. Yeasts have a smooth surface. Acid forming sugar fermenters are whitish to yellow, non-acid formers are, by contrast, greenish to blue-green. Remarks: The low pH suppresses the growth of most bacteria. This medium is available with various types of membrane filters: 3 different pore sizes and 2 different colors.



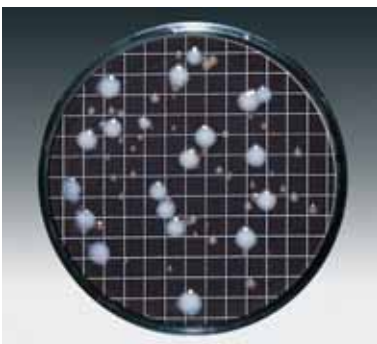
Saccaromyces cerevisiae



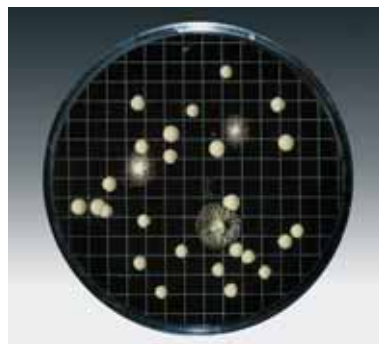
Alternaria humicola



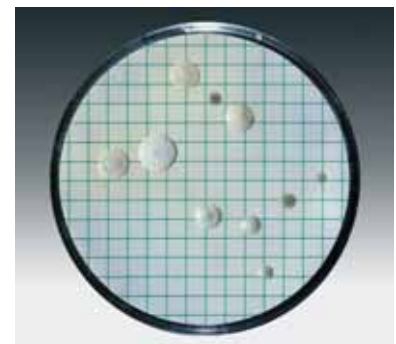
Torula lipolytica



Mixed culture from *Saccaromyces* and *Rhodotorula*



Yeasts and molds from cough syrup



Mixed culture from a soft drink

NEW! Wallerstein (WL Nutrient) NPS
Type 14089

For the detection and enumeration of the microbiological flora of brewing and fermentation processes acc. to Green and Gray (1950). Dehydrated culture medium for cultivating microorganisms in beverages, beer, wine, soft drinks, concentrates, fruit juice and other products.

References:
ISO 7704 and Internal SOPs.

Incubation Conditions:
Up to 14 days at 25–30°C aerobic or anaerobic depending on the target of the investigation.

Evaluation and Typical Results:
Yeasts usually grow as yellowish green colonies. Molds generally form velvety or fluffy cotton-like colonies that look white in the early growth phase and may take various colors after conidiospore production. Bacteria grow very slowly and their colonies are of different size and color. Remarks: The addition of 0.004 g/l cycloheximide to the wetting solution make the medium selective for lactic acid bacteria.

Wort NPS
Type 14058

For the detection and determination of yeasts and molds. Dehydrated culture medium for cultivating microorganisms in raw materials, beverages, beer, wine, soft drinks, concentrates, foods and other products.

References:
VLB and Internal SOPs.

Incubation Conditions:
2–5 days at 25–30° C

Evaluation and Typical Results:
Yeasts usually develop smooth white or colored colonies. Molds generally form velvety or fluffy cotton-like colonies that look white in the early growth phase and may take various colors after conidiospore production.

6. Product-spoiling microorganisms

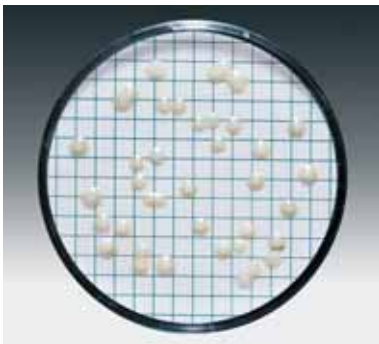
Glucose Tryptone NPS
Type 14066

For the enumeration of mesophilic and thermophilic bacteria, especially “flat-sour” microorganisms in canned foods. Tight-fitting, special petri dishes for micro-aerophilic incubation. Dehydrated culture medium for cultivating microorganisms in fruit juice, sugar, sugar products, foods and other products.

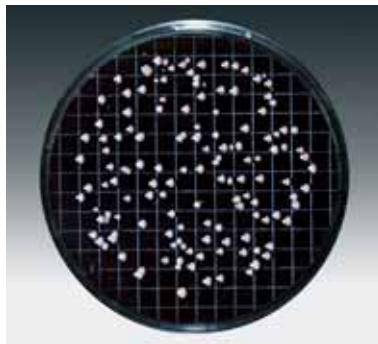
References:
APHA (dairy), APHA (food), AOAC, ICUMSA, IFU, ISO 7704, NCA and Internal SOPs.

Incubation Conditions:
48h at 55±2° C or up to 3days at 31±1° C

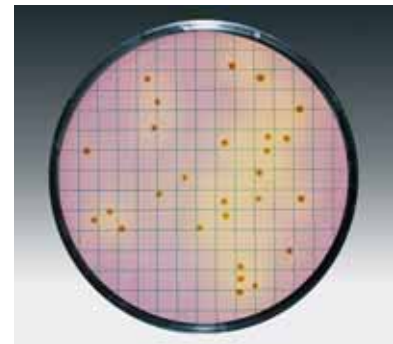
Evaluation and Typical Results:
Microorganisms that ferment glucose and produce acid grow as yellowish green colonies. “Flat-sour” colonies have a diameter of 2-5 mm, a yellowish-green color and are surrounded by a yellow zone. Remarks: For the incubation at 55 degrees Celsius the petri dishes must be placed into a moist chamber.



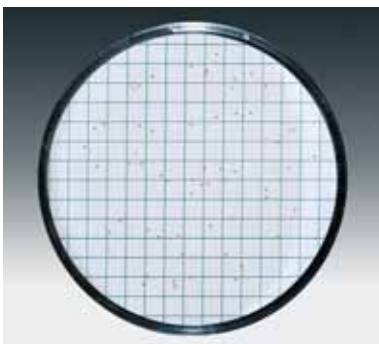
Saccharomyces cerevisiae



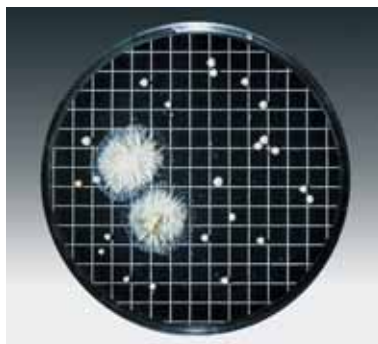
Saccharomyces cerevisiae



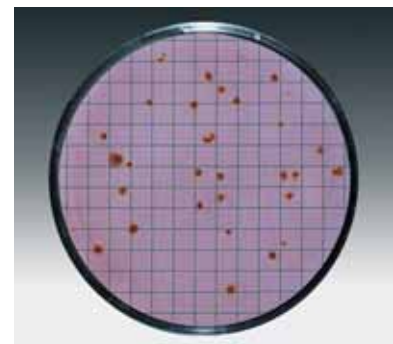
Bacillus coagulans, the “flat sour” colony



Lactobacillus plantarum



Yeasts and molds from spoiled beer



Mixed culture from canned vegetables

6. Product-spoiling microorganisms

Jus de Tomate (Tomato Juice) NPS Type 14079

For the detection of product spoiling lactic acid bacteria especially *Oenococcus oeni* acc. to Dubois, Bindan and Lafon-Lafourcade. Tight-fitting, special petri dishes for microaerophilic incubation. Dehydrated culture medium for cultivating microorganisms in wine, fruit juice and other products.

References:

ISO 7704, Lanaridris& Lafon-Lafourcade and Internal SOPs.

Incubation Conditions:

4-6 days (up to 8 days) at 28-30° C

Evaluation and Typical Results:

Lactobacilli form compact, whitish to slightly yellowish colonies with 1-3 mm diameter. Pediococci develop somewhat smaller colonies with approx. 1 mm diameter that later get a whitish to slightly brownish color. *Oenococcus oeni* grows as colorless to whitish colonies with a diameter smaller than 1 mm. Remarks: This medium must be incubated under anaerobic to microaerophilic conditions.

Orange Serum NPS Type 14062; 14096

For the isolation and enumeration of acid-tolerant microorganisms. Dehydrated culture medium for cultivating microorganisms in raw materials, water (general quality), waste water, wine, soft drinks, concentrates, fruit juice, foods and other products.

References:

APHA (water), IFU, ISO 7704, MPP (packaging staff) and Internal SOPs.

Incubation Conditions:

up to 3d at 30±2° C aerobic or anaerobic

Evaluation and Typical Results:

Only acid-tolerant microorganisms can grow on this medium such as lactic acid bacteria (*Lactobacillus*, *Pediococcus* etc.), acetic acid bacteria, yeasts and molds. Remarks: This medium is available with pH 5,5 and with pH 3,2.

VLB-S7-S NPS Type 14059

For the detection of pediococci and lactobacilli according to Emeis; modified acc. to Rinck and Wackerbauer. Dehydrated culture medium for cultivating microorganisms in beer and other products.

References:

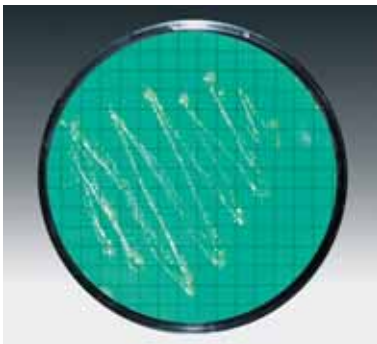
EBC, ISO 7704, MEBAC, VLB and Internal SOPs.

Incubation Conditions:

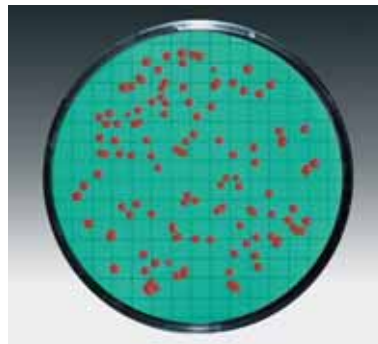
5-7 days at 25-28° C, anaerobic

Evaluation and Typical Results:

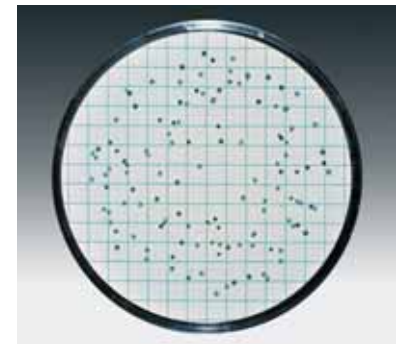
Pediococci ("Sarcina") develop round pale green colonies with smooth peripheries and approx. 1 mm in diameter. Lactobacilli grow as slightly rounded, irregularly lobed colonies with approx. 2 mm in diameter which are initially light green and later dark green. Remarks: This medium must be incubated under anaerobic to microaerophilic conditions.



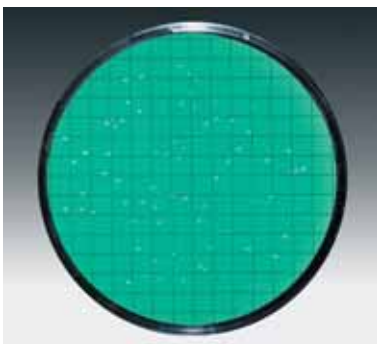
Lactic-acid bacteria, streak



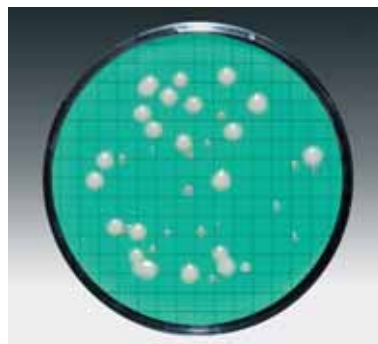
Rhodotorula spec.



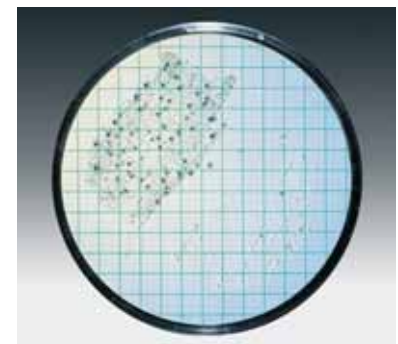
Lactobacillus pastorianus



Oenococcus oeni from wine



Mixed culture from a soft drink



Lactobacilli and pediococci from sediment, streak

6. Product-spoiling microorganisms

Weman NPS Type 14065

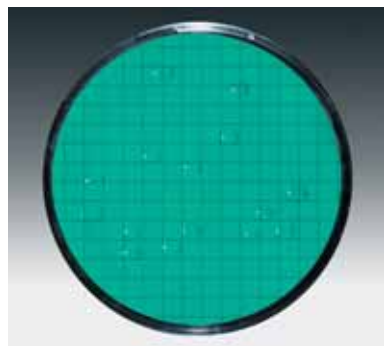
For the detection and determination of slime-forming mesophilic bacteria according to Weman, modified acc. to Lorenz. Dehydrated culture medium for cultivating microorganisms in soft drinks, concentrates, sugar, sugar products and other products.

References:
ICUMSA, ISO 7704 and Internal SOPs.

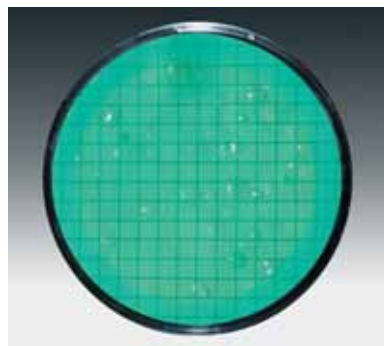
Incubation Conditions:
2–3 days at 25–30° C

Evaluation and Typical Results:

The colonies of slime-forming mesophilic bacteria are smooth, round, usually colorless and transparent or translucent. Some have a diameter greater than 5 mm.



Leuconostoc mesenteroides



Mixed culture from sugar syrup

Troubleshooting Guide

Failure to follow the directions may lead to unsatisfactory results listed below:

1. Inhibited growth, tiny colonies

- pad too dry: not enough water used

2. Colonies run

- pad too wet, water film on the membrane filter: too much water used.
- Colonies of motile microbes (such as Bacillus or Proteus) tend to run even though the water dosage is correct. To prevent this, add NaCl or an emulsifier.

3. Contamination from underneath

Inhibited colony growth, excess ring of liquid cloudy, often including discoloration of the pad:

- membrane placed with grid facedown on the pad instead of faceup
- contamination during rehydration (by airborne microbes, by contact or by contaminated water)
- contamination during preparation
- microbes rinsed off the membrane filter by incomplete vacuum filtration of the sample or rinse liquid or by tilting the prepared petri dish
- contaminated filter support
- contaminated forceps

4. Growth on one side only

- petri dish slanted in the incubator

5. Too profuse or too sparse growth

(optimum microbial number between 20 and 200 per filter)

- wrong dilution selected or sample inadequately mixed with the diluent.

6. Non-uniform growth

- sample volume less than 5 ml filtered without adding sterile NaCl-buffer-solution as a diluent or sample volume inadequately mixed with the diluent.

Membrane Filters for Use on Agar Plates or on Adsorbent Pads

If agar plates or adsorbent pads to be wetted with liquid culture medium are used instead of Nutrient Pad Sets, we recommend Sartorius Stedim Biotech cellulose nitrate (cellulose ester) membrane filters. These membranes are offered in a choice of three different colors to suit your specific test application, and provide a high-contrast background. For simple evaluation of the results, a grid divides the filtration area into 130 squares, each measuring 3.1×3.1 mm. Naturally, the membrane filters must be free of microbes. For this purpose, they can be boiled or autoclaved. However, it is more convenient to order the membrane filters individually packaged and sterilized. The certificate included in every package documents the quality assurance tests as well as the compliance of the 0.45 µm membrane filters with ISO 7704.

Cellulose nitrate prefilters

11301, a white membrane filter with a pore size of 8 µm is used as a prefilter in a special prefilter attachment (16807) for bacteriological analyses. It retains coarse suspended particles, whereas it allows microorganisms to pass through. These microbes are trapped on the surface of the underlying bacteria-retentive membrane filter. Order no.: 11301-047ACN and 11301-050ACN

Remarks

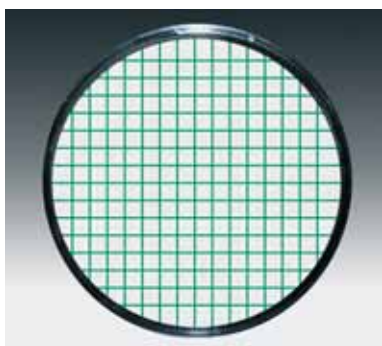
The incubation conditions are recommended by Sartorius Stedim Biotech. They may be varied according to the type of samples in compliance with the reference standard or customer's requirements.

The pictures show typical appearance of the mentioned microorganisms. In particular cases, color and shape of the colonies could vary from the expected habitus. Further tests may be necessary to validate the result.

Sartorius Stedim Biotech shall not be liable for consequential and/or incidental damage sustained by any customer from the use of its products.

Membrane Filters for Use on Agar Plates or on Absorbent Pads

For detection of bacteria in dyed media.



White membrane with black grid

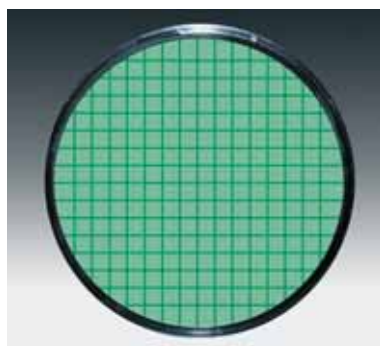
Pore size	Ø	Pckg. size	Order no.
0.2 µm	47	100	11407-47-ACN*
	47	1,000	11407-47-ACR*
	50	100	11407-50-ACN*
	50	1,000	11407-50-ACR
0.45 µm	47	100	11406-47-ACN*
	47	1,000	11406-47-ACR*
	50	100	11406-50-ACN*
	50	1,000	11406-50-ACR*
NEW! HighFlow	47	100	114H6-47-ACN
		1,000	114H6-47-ACR
		50	114H6-50-ACN
		1,000	114H6-50-ACR
0.65 µm	47	100	11405-47-ACN*
	50	100	11405-50-ACN
0.8 µm	47	100	11404-47-ACN*
	47	1,000	11404-47-ACR
	50	100	11404-50-ACN*
1.2 µm	47	100	11403-47ACN*
	47	1,000	11403-47ACR
	50	100	11403-50ACN*
	50	1,000	11403-50ACR

White membrane with green grid

Pore size	Ø	Pckg. size	Order no.
0.45 µm	47	100	13906-47-ACN*
	47	1,000	13906-47-ACR*
	50	100	13906-50-ACN*
	50	1,000	13906-50-ACR*
NEW! HighFlow	47	100	139H6-47-ACN
		1,000	139H6-47-ACR
		50	139H6-50-ACN
0.65 µm	47	100	13905-47-ACN
1.2 µm	47	100	13903-47-ACN

Other types on request

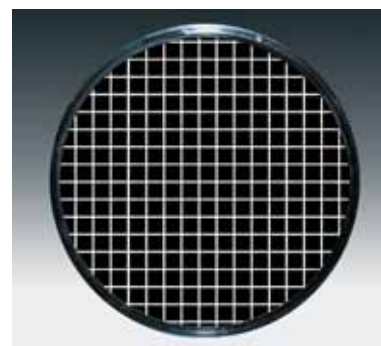
Providing optimal contrast to light-colored or transparent bacteria colonies.



Green membrane with dark green grid

Pore size	Ø	Pckg. size	Order no.
0.45 µm	47	100	13806-47-ACN*
	47	1,000	13806-47-ACR*
	50	100	13806-50-ACN*
	50	1,000	13806-50-ACR*

For detection of yeasts and molds.



Grey membrane with white grid

Pore size	Ø	Pckg. size	Order no.
0.45 µm	47	100	13006-47-ACN*
	47	1,000	13006-47-ACR*
	50	100	13006-50-ACN*
	50	1,000	13006-50-ACR
0.65 µm	47	100	13005-47-ACN*
	50	100	13005-50-ACN*
	50	1,000	13005-50-ACR
0.8 µm	47	100	13004-47-ACN*
	47	1,000	13004-47-ACR
	50	100	13004-50-ACN*
8 µm	47	100	13001-47-N (non-sterile)
	50	100	13001-50-N (non-sterile)

NEW! HighFlow

The special pore structure of the new 0.45µm HighFlow membrane filters allow shorter filtration times due to higher flow rates and throughputs.

As every Sartorius Stedim Biotech 0.45 µm membrane filter lot these membranes are also tested and released according to ISO 7704.

* Also available as a non-sterile version.
To order boxes with 100 pcs. replace ACN with N
and for boxes of 1,000 pcs. replace ACR with R.

Typical Application Examples

Product	Detection and enumeration of...	Nutrient Pad type
Beer	Lactobacilli and Pediococci and other beer spoiling organisms	VLB-S7-S
	Total colony count	Standard, Standard TTC
	Wild yeasts	Lysine
	Yeasts and molds	Malt Extract*, Wallerstein Nutrient, Wort
Foods	Acid-tolerant microorganisms	Orange Serum
	Enterobacteria, E. coli and coliforms	Chromocult, ECD, Endo, (MacConkey), m FC, Teepol Lauryl Sulphate, Tergitol TTC
	Enterococci, Enterococcus faecalis	Azide KF Strep
	Pseudomonas aeruginosa	Cetrimide
	Salmonellae	Bismuth Sulfite
	Staphylococci, Staphylococcus aureus	Chapman
	Thermophilic spore formers and mesophilic bacteria	Glucose Tryptone
	Total colony count	Caso, Standard, Standard TTC, TGE Tryptone Glucose Extract
	Yeasts and molds	Malt Extract, Wort
Fruit juice	Enterobacteria, E. coli and coliforms	Endo, (MacConkey), Tergitol TTC*
	Oenococcus and other product spoiling organisms	Jus de Tomate Tomato Juice, Orange Serum
	Yeasts and molds	Malt Extract, Schaufus Pottinger m Green yeast and mold, Wallerstein Nutrient, Wort
Milk	E. coli and coliforms	Endo
	Enterococci, Enterococcus faecalis	Azide KF Strep
	Salmonellae	Bismuth Sulfite
Pharmaceuticals, WFI, raw materials and cosmetics	Enterobacteria, E. coli	MacConkey
	Enterococci, Enterococcus faecalis	Azide KF Strep
	Pseudomonas aeruginosa	Cetrimide
	Salmonellae	Bismuth Sulfite
	Staphylococci, Staphylococcus aureus	Chapman
	Total colony count	Caso, R2A
	Yeasts and molds, Candida albicans	Sabouraud
Soft drinks, concentrates	Acid-tolerant microorganisms, Lactic-acid bacteria	Orange Serum, VLB-S-7-S
	Enterobacteria, E. coli and coliforms	Endo, MacConkey
	Mesophilic slime-forming bacteria, Leuconostoc	Weman
	Total colony count	Standard*, Standard TTC*, TGE Tryptone Glucose Extract
	Yeasts and molds	Malt Extract, Schaufus Pottinger m Green yeast and mold, Wallerstein Nutrient, Wort
Sugar, sugar products	E. coli and coliforms	Endo
	Mesophilic slime-forming bacteria, Leuconostoc	Weman
	Thermophilic spore formers and mesophilic bacteria	Glucose Tryptone
	Yeasts and molds	Malt Extract*, Schaufus Pottinger m Green yeast and mold, Wort*
Water (general quality), mineral water, natural water, waste water	Acid-tolerant microorganisms, Lactic-acid bacteria	Orange Serum
	Enterobacteria, E. coli and coliforms	Chromocult, ECD, Endo, (MacConkey), m FC, Teepol Lauryl Sulphate, Tergitol TTC
	Enterococci, Enterococcus faecalis	Azide KF Strep
	Pseudomonas aeruginosa	Cetrimide
	Salmonellae	Bismuth Sulfite
	Staphylococci, Staphylococcus aureus	Chapman
	Total colony count	Caso, R2A, Standard, Standard TTC, TGE Tryptone Glucose Extract, Yeast Extract
	Yeasts and molds, Candida albicans	Sabouraud
Wine	Acetobacter	Orange Serum, Wort (both wetted with 5-8% ethanol)
	Acid-tolerant microorganisms, Lactic-acid bacteria	Orange Serum
	Oenococcus and other wine spoiling organ.	Jus de Tomate Tomato Juice
	Yeasts and molds	Malt Extract, Schaufus Pottinger m Green yeast and mold, Wallerstein Nutrient, Wort

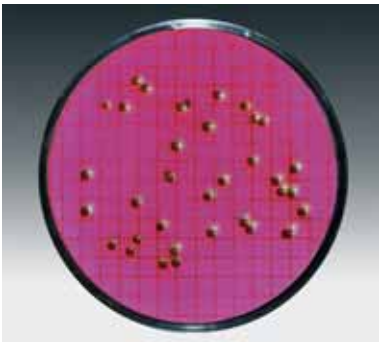
* These NPS types are suitable for the determination of the mentioned microorganisms, although the media are not explicit declared in the references described in this publication.

Growth comparison

The principle of the membrane filter method is based on the concentration of microorganisms from relatively large samples on the surface of a membrane filter. Nutrients and metabolites are exchanged through the pore system of the membrane filter. The pore size alone is not a meaningful

criteria. Due to the variance in allocation of the pores, not all membranes guarantee sufficient nutrient supply. A comparison of Sartorius Stedim Biotech cellulose nitrate (cellulose ester) membranes with competitive mixed ester membranes reveals significant differences in growth.

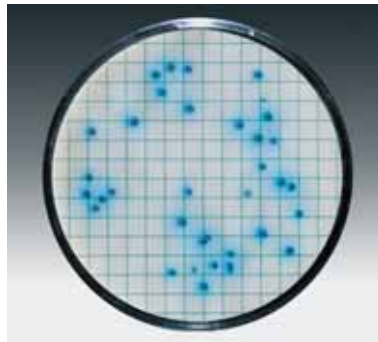
Growth of *E. coli* on Endo NPS



Sartorius Stedim Biotech cellulose nitrate membrane

E. coli forms red colonies with a metallic sheen. Other coliforms would grow as dark to light red colonies without metallic sheen.

Growth of *Pseudomonas aeruginosa* on Cetrimide NPS



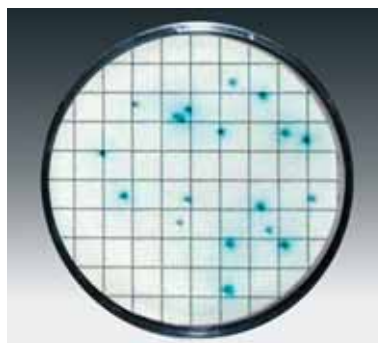
Sartorius Stedim Biotech cellulose nitrate membrane

Pseudomonas aeruginosa forms blue, blue-green or yellow-green colonies with 1–2 mm diameter and blue zones. The colonies produce pyocyanin and fluorescein and show fluorescence in UV-light. Other *Pseudomonads* would develop colonies with different colors.



Mixed esters membrane

E. coli shows no metallic sheen on this mixed esters membrane. Therefore it is very difficult to differentiate between *E. coli* and coliforms without any further test. A quantitative statement is difficult due to the fact of running colonies on the mixed esters membrane surface.



Mixed esters membrane

On this mixed esters membrane grow less colonies and without the blue zone. Due to the variance in the allocation of the pores, here the mixed esters membrane did not guarantee a sufficient nutrient supply. This may cause in false negative results.

Accessories



Combisart® 6-branch manifold

Made of high-grade stainless steel (B.S. 304S31 | AISI 304); accommodates any type of vacuum funnel. Stainless steel three-way valves allow the vacuum for each filter station to be individually controlled and each holder to be sterilely vented. This rules out secondary contamination of the underside of the filter. The material and the design meet the requirements of the current European Pharmacopoeia and ISO 8199.

- 16843 6-branch manifold
- 16842 3-branch manifold
- 17575-ACK Minisart® SRP 25, 50 sterile venting filters
- 16840 Stainless steel single base for adapting Biosart 100 or 250 or stainless steel funnels onto the Combisart manifold.

Traditional 3- and 6-branch manifold systems

- 16824 3-Branch Manifold system 3x100 ml funnels
- 16828 3-Branch Manifold system 3x500 ml funnels
- 16831 6-Branch Manifold system 6x500 ml funnels
- 16832 6-Branch Manifold system 6x100 ml funnels



Combisart® 3-branch manifold plus Biosart® 250 Funnels

The Biosart 250 Funnel has been designed for microbiological quality assurance in industry. The sterile 250 ml (50 ml graduations) plastic funnel guarantees fast filtration and high sample throughputs during routine testing. Its large inner diameter allows high flow rates, and the tapered inner wall permit thorough flushing of the funnel, after filtration.

- 16407-25-ALK Biosart 250 Funnels, 50 units, sterile-packaged
- 16407-25-ACK Biosart 250 Funnels, 50 units, individually sterile-packaged



Combisart® 3-branch manifold plus Biosart® 100 Monitors

Biosart 100 Monitors are sterile disposables with an incorporated membrane filter and cellulose pad. They are ready-to-use and after filtration, the funnel will be removed, so the lid and the base fit to a petri dish. Each box contains 48 units with 47 mm, gridded membrane filters.

- 16401-47-07-ACK Biosart 100 Monitor, individually sterile-packaged, 0.2 µm white|black grid
- 16401-47-06-ACK Biosart 100 Monitor, individually sterile-packaged, 0.45 µm white|black grid
- 16402-47-06-ACK Biosart 100 Monitor, individually sterile-packaged, 0.45 µm green|dark green grid
- 16403-47-06-ACK Biosart 100 Monitor, individually sterile-packaged, 0.45 µm grey|white grid
- 16414 Biosart 100 Adapter



Combisart® individual systems and filter holders

For low number of samples to test, the individual system is ideal to use. In this equipment set-up, you simply use a silicone stopper and a single base to fit your choice of funnel type on a suction flask.

- 16841 Stainless steel single base
- 6981065 Stainless steel funnel, 100 ml
- 6981002 Stainless steel funnel, 500 ml
- 17575-ACK Minisart® SRP 25, 50 sterile venting filters
- 17173 Silicone stopper
- 16672 Suction flask

Alternatively to position 1-3 you can use 16219-CS as 100 ml filter holder or 16201-CS as 500 ml filter holder.



Vacuum pumps, water traps and vacuum hose

The vacuum pumps are neoprene membrane pumps with low noise level, oil- and maintenance-free, reliable sources of vacuum. The water traps are preventing an overflow of filtrate into the vacuum pump

- 16694-2-50-22 Microsart® maxi.vac for multiple filtration runs, 230 V, 50 Hz
- 16694-1-60-22 Microsart® maxi.vac, 115 V, 60 Hz
- 16694-2-50-06 Microsart® mini.vac for single filtration run, 230 V, 50 Hz
- 16694-1-60-06 Microsart® mini.vac, 115 V, 60 Hz
- 17804-M Vacusart®, 3 individually sterile-packaged PTFE filter
- 166MP-3 Microsart® e.jet Pump, 3.5 l/min
- 16610 Woulff's bottle, 500 ml, with stop cock
- 16623 Rubber vacuum hose, 1 m



Stainless steel prefilter attachment

For removal of coarse particulate substances from samples in a single step along with bacteria-retentive filtration for subsequent microbiological testing. Clips between a filter support (16840 or 16841) and a stainless steel funnel (as show at the photo) or Biosart 250 Funnel. Autoclavable and can be flamed.

- 16807 Prefilter attachment



Dosing Syringe | Colony Counter

The most convenient way to moist the NPS with water is to use a dosing syringe with an adapted Minisart syringe filter. Simultaneous sterilization and dosing of demineralized water in 3.5 ml steps is easy done by dropping the sinker at the end of the suction tubing into the water, and the dosing syringe filled and dosed by operating the twigger automatically.

Compact battery operated colony counter, is as simple to use as a ball-point pen, and has a 4-digit LCD-display.

16685-2	Dosing syringe
17597k	Minisart®, 0.2 µm, individually sterile-packaged
17649	Colony Counter



Microsart® e.motion Dispenser – membrane filters on demand.

The completely new membrane filter dispenser meets all requirements placed on advanced laboratory equipment. The membrane filters are released from their sterile packaging fully automatically at the touch of a button or hands-free – a dispensing operation is triggered when the optical sensor detects approaching tweezers.

16712	Microsart® e.motion Dispenser (not available in the U.S. and Canada)
-------	--



Absorbent Pads

The 1.4 mm thick absorbent pads are wetted with the appropriate liquid culture medium before a membrane filter is placed on. Each box contains 1,000 absorbent pads in 10 tubes, each with 100 pads, and with manual dispensing device, all presterilized.

15410-47-ALR	Absorbent pads, 47 mm, each approx. 3 ml absorbent capacity
15410-50-ALR	Absorbent pads, 50 mm, each approx. 3.5 ml absorbent capacity
13906-47-APR	Absorbent pads, 47 mm, including membrane filters 0.45 µm, white green grid, individually sterile-packaged



AirPort MD8

AirPort MD8 uses the gelatin membrane filter method guaranteeing reliable and exact measurement results. It is battery-powered and portable for universal use.

16757	AirPort MD8, 100-240 V, 47-63 Hz, complete with holder and battery charger
17528-80-ACD	Gelatin membranes, individually sterile-packaged, each in 1 bag
17528-80-BZD	Gelatin membranes, individually sterile-packaged, each in 3 bags



MD8 airscan®

Together with disposable gelatin filter units the system is routinely used for the quantitative detection of air-borne organisms, mainly in sterile areas of class A and B, isolators and blow-fill-seal machines. The very high, adjustable air flow rate enables short, isokinetic sampling times.

16746	MD8 airscan, 230 V, 50 Hz
16747	MD8 airscan, 115 V, 60 Hz
16748	MD8 airscan, 100 V, 50-60 Hz
17801	Holder for disposable gelatin filter units
17528-80-ACD	Gelatin membranes, individually sterile-packaged, each in 1 bag
17528-80-BZD	Gelatin membranes, individually sterile-packaged, each in 3 bags



arium® Laboratory Water Systems

arium® – the name of the flexible Sartorius Stedim Biotech family of laboratory systems for reagent grade water: arium® 613, the powerful reverse osmosis system and the arium® 611 series, ultrapure (Type 1) laboratory water purification system. Whether it's reagent grade water for routine analysis or pyrogen free water for sensitive cell lines, there's a model to suit your application.

611DI	all critical lab applications
611UV	low TOC applications e.g. HPLC
611UF	low endotoxin applications
611VF	for low TOC and low endotoxin applications
61315060	F05M1A Includes arium 61315, 60 l Tank, 2 x RO modules, 2 x Pre-treatment cartridges + sanitizing syringes for RO module & storage tank

References and Technical Data of Nutrient Pad Sets

NPS Type	References (reference guide on page 26)	Order # ¹	pH (±0.2)	Recommended Incubation Conditions	Membrane Type: Order #, pore size, filter color grid color	Shelf life [month]	Test Strains
Azide KF Strep	APHA (food), APHA (water), EG 98/83, HMSO, ISO 7704, ISO 7899-2, ISO 8199, LMBG, MTVO and Internal SOPs.	14051	7.2 (±0.1)	44 ±4h at 36 ±2°C	13806 (0.45µm, green dark green)	18	7, 8, 9, 22, 26
Bismuth Sulfite	AFNOR, APHA (dairy), APHA (food), AOAC, DGHM, FDA, HMSO, IDF, ISO 6579 [1981], ISO 7704, USDA, USP and Internal SOPs.	14057	7.6	up to 48 h at 36 ±2°C	13806 (0.45µm, green dark green)	18	3, 9, 21, 25, 26
Caso	APHA (dairy), APHA (food), APHA (water), AOAC, DAB, EG 98/83, EP, FDA, IDF, ISO 7704, ISO 8199, EN 9308-1 [1990], ISO 9308-1 [2001], USDA, USP and Internal SOPs.	14063	7.3	up to 5d at 32.5 ±2.5°C	13806 (0.45µm, green dark green)	18	1, 3, 5, 9, 18, 22, 25, 26
Cetrimide	APHA (water), AOAC, ASM, DAB, DIN 38411, EG 98/83, EP, FDA, ISO 7704, ISO 8199, EN 12780, USP and Internal SOPs.	14075	7.1	48 ±4 h at 37 ±1°C	13906 (0.45µm, white green)	18	4, 9, 21, 22, 26
Chapman	APHA (food), AOAC, DGHM, FDA, HMSO, ISO 7704, USP and Internal SOPs.	14074	7.4	up to 3d at 36 ±2°C	13906 (0.45µm, white green)	18	7, 9, 21, 26, 27
Chromocult	ISO 7704, Journal Food Protection, ZenHyg (journal of hygiene) and Internal SOPs.	14087	6.8	24h at 36 ±1°C	11406 (0.45µm, white black)	18	6, 9, 11, 21, 25
ECD	APHA (water), DIN 10110, EG 98/83, ISO 7704, ISO 8199, ISO 9308-1 [2001], LMBG, USDA and Internal SOPs.	14082	7.0	18–24 h at 37 ±1°C or acc. to ISO 9308-1	13906 (0.45µm, white green)	18	6, 9, 21, 22, 26
Endo	APHA (dairy), APHA (food), APHA (water), DGHM, ISO 7704, ISO 9308-1 [1990], MTVO, USDA and Internal SOPs.	14053	7.2	24±2 h at 36±2°C or acc. to ISO 9308-1 [1990]	139H6 (0.45µm, white green)	18	6, 9, 11, 21, 25
Glucose Tryptone	APHA (dairy), APHA (food), AOAC, ICUMSA, IFU, ISO 7704, NCA and Internal SOPs.	14066	6.8	48h at 55 ±2°C or up to 3d at 31 ±1°C	13906 (0.45µm, white green)	18	3, 9, 10, 17, 18
Jus de Tomate Tomato Juice	ISO 7704, LanaridrisEt Lafon-Lafourcade and Internal SOPs.	14079	4.4	4–6 days (up to 8d) at 28–30°C	13806 (0.45µm, green dark green)	18	12, 14, 15, 24
Lysine	Journal Institute of Brewing, VLB and Internal SOPs.	14061	5.0	2–5 days at 25–28°C	13005 (0.65µm, gray white)	24	5, 20, 23, 24
MacConkey	APHA (dairy), APHA (food), APHA (water), AOAC, DAB, DIN 38411, DGHM, EP, ISO 7704, LMBG, MTVO, USDA, USP and Internal SOPs.	14097	7.1	18–72 h at 30–35°C	13906 (0.45µm, white green)	18	2, 8, 9, 21, 25, 26
Malt Extract	APHA (food), AOAC, IFU and Internal SOPs.	14086	3.5 (±0.5)	up to 3d at 25 ±2°C or 7d at 30 ±2°C	--N: 13004 (0.8µm, gray white); CCN: 13006 (0.45µm, gray white)	24	5, 20, 23, 24
m FC	APHA (food), APHA (water), AOAC, EPA, FDA, ISO 7704, ISO 9308-1 [1990], USDA and Internal SOPs.	14068	7.4	20 ±4 h at 36 ±2°C (44 ±1°Cwater bath)	13906 (0.45µm, white green)	18	6, 9, 11, 21, 26
Orange Serum	APHA (water), IFU, ISO 7704, MPP (packaging staff) and Internal SOPs.	14062	5.5	up to 3d at 30 ±2°C aerobic or anaerobic	13806 (0.45µm, green dark green)	24	2, 5, 20, 23, 24
Orange Serum	APHA (water), IFU, MPP (packaging staff) and Internal SOPs.	14096	3.2	up to 3d at 30 ±2°C aerobic or anaerobic	13004 (0.8µm, gray white)	24	2, 5, 20, 23, 24
R2A	APHA (water), EP, ISO 7704 and Internal SOPs.	14084	7.2	48–72 h at 35 ±2°C; 5–7 days at 20 ±2°C	13806 (0.45µm, green dark green)	18	1, 3, 5, 9, 18, 22, 26
Sabouraud	APHA (food), AOAC, EP, USP and Internal SOPs.	14069	5.6	up to 5 days at 20–25°C	13005 (0.65µm, gray white)	24	1, 5, 20, 23, 24
Schaufus Pottinger m Green yeast and mold	Internal SOPs.	14070	4.4	2–7 days at 25–30°C	13905 (0.65µm, white green)	24	3, 5, 20, 23, 24
Schaufus Pottinger m Green yeast and mold	Internal SOPs.	14072	4.4	2–7 days at 25–30°C	13903 (1.2µm, white green)	24	3, 5, 20, 23, 24

NPS Type	References (reference guide on page 26)	Order # ¹	pH (±0.2)	Recommended Incubation Conditions	Membrane Type: Order #, pore size, filter color grid color	Shelf life [month]	Test Strains
Schaufus Pottinger m Green yeast and mold	Internal SOPs.	14080	4.4	2-7 days at 25-30°C	13004 (0.8µm, gray white)	24	3, 5, 20, 23, 24
Schaufus Pottinger m Green yeast and mold	Internal SOPs.	14083	4.4	2-7 days at 25-30°C	13005 (0.65µm, gray white)	24	3, 5, 20, 23, 24
Schaufus Pottinger m Green yeast and mold	Internal SOPs.	14091	4.4	2-7 days at 25-30°C	13006 (0.45µm, gray white)	24	3, 5, 20, 23, 24
Standard	APHA (water), ISO 7704, VLB and Internal SOPs.	14064	7.2	2-5d at 30 ±2°C	13806 (0.45µm, green dark green)	24	3, 7, 9, 18, 26
Standard TTC	APHA (water), ISO 7704, VLB and Internal SOPs.	14055	7.2	2-5d at 30 ±2°C	13806 (0.45µm, green dark green)	24	3, 7, 9, 18, 26
Standard TTC I mod.	APHA (water), ISO 7704, VLB and Internal SOPs.	14085	7.2	2-5d at 30 ±2°C	13806 (0.45µm, green dark green)	18	3, 7, 9, 18, 26
Teepol Lauryl Sulphate	AFNOR, APHA (water), BS, FDA, ISO 7704, ISO 9308-1 [1990], USDA and Internal SOPs.	14067	7.2	18-24 h at 36 ±1°C	13906 (0.45µm, white green)	18	6, 9, 11, 21, 26
Tergitol TTC	APHA (food), EG 98/83, ISO 7704, ISO 8199, ISO 9308-1 [1990], ISO 9308-1 [2001] and Internal SOPs.	14056	8.0	21±3 h at 36 ±2°C	13906 (0.45µm, white green)	18	6, 9, 11, 21, 26
TGE Tryptone Glucose Extract	APHA (dairy), APHA (food), APHA (water), API, ISO 7704 and Internal SOPs.	14076	7.0	2-5d at 30 ±2°C	13806 (0.45µm, green dark green)	24	9, 18, 26
VLB-S7-S	EBC, ISO 7704, MEBAC, VLB and Internal SOPs.	14059	5.5	5-7 days at 25-28°C, anaerobic	13906 (0.45µm, white green)	18	12, 13, 15, 19
Wallerstein Nutrient WL Nutrient	ISO 7704 and Internal SOPs.	14089	5.5	up to 14 days at 25-30°C aerobic or anaerobic	13906 (0.45µm, white green)	24	5, 12, 20, 23, 24
Weman	ICUMSA, ISO 7704 and Internal SOPs.	14065	5.5	2-3 days at 25-30°C	13806 (0.45µm, green dark green)	18	14, 16, 17
Wort	VLB and Internal SOPs.	14058	4.4	2-5 days at 25-30°C	13005 (0.65µm, gray white)	24	5, 20, 23, 24
Yeast Extract	EG 98/83, HMSO, ISO 6222, ISO 7704, ISO 8199 and Internal SOPs.	14090	7.2	44 ± 4h at 36 ±2°C; 68 ±4h at 22 ±2°C	13806 (0.45µm, green dark green)	24	3, 7, 9, 18, 26

¹) NPS Types are available with 47 mm or 50 mm membrane filters. Most of the NPS types are available with Microsart® e.motion Membrane Filters for dispensers. Other types on request.

Test Strains [ATCC No.], [DSM No.]

Number	Test strain
1	Aspergillus niger 16404, 1988
2	Bacillus cereus 11778, 345
3	Bacillus subtilis 6633, 347
4	Brevundimonas diminuta 19146, 1635
5	Candida albicans 10231, 1386
6	Enterobacter aerogenes 13048, 30053
7	Enterococcus faecalis 29212, 2570
8	Enterococcus faecium 35667, 6177
9	Escherichia coli 8739, 1576
10	Geobacillus stearothermophilus 7953, 5934
11	Klebsiella pneumoniae 13883, 30104
12	Lactobacillus lindneri DSM 20690
13	Lactobacillus plantarum 14917, 20174

Number	Test strain
14	Leuconostoc mesenteroides 8293, 20343
15	Oenococcus oeni 23279, 20252
16	Mixed culture from honey
17	Mixed culture from raw sugar
18	Mixed culture from tap water
19	Pediococcus damnosus 29358, 20331
20	Penicillium commune 10428, 2211
21	Proteus mirabilis 14153, 788
22	Pseudomonas aeruginosa 9027, 1128
23	Rhodotorula mucilaginosa DSM 70404
24	Saccharomyces cerevisiae 9763, 1334
25	Salomonella choleraesuis DSM 554
26	Staphylococcus aureus 6538P, 346
27	Staphylococcus epidermidis 12228, 1798

Reference Guide

Abbreviation	Title
AFNOR	Association Franchise de Normalisation
APHA (dairy)	American Public Health Association: Standard Methods for the examination of dairy products
APHA (food)	American Public Health Association: Compendium of methods for the microbiological examination of foods
APHA (water)	American Public Health Association, American Water Works Association (AWWA) and Water Environment Federation (WEF): Standard Methods for the Examination of Water and Waste Water
AOAC	Association of Official Analytical Chemists
API	American Petroleum Institute: Recommended practice for biological Analysis of Subsurface Injection waters
ASM	American Society for Microbiology
BS	British Standards
DAB	Deutsches Arzneimittelbuch (German Pharmacopoeia, replaced by EP)
DIN 10110	Deutsches Institut für Normung: Mikrobiologische Fleischuntersuchung. Bestimmung der E. coli. (Microbial detection of E. coli on meat)
DIN 38411	Deutsches Institut für Normung: Deutsche Einheitsverfahren zur Wasser-, Abwasser- und Schlammuntersuchung (German standard for water, waste water and sludge analysis)
DGHM	Deutsche Gesellschaft für Hygiene und Mikrobiologie (German Association of Hygiene and Microbiology)
EBC	European Brewery Convention
EG 98/83	European Guideline 98/83: Water Quality for human purpose
EP	European Pharmacopoeia
EPA	U.S. Environmental Protection Agency: Laboratory standards for equipment and materials
FDA	U.S. Federal Drug Administration
HMSO	Her Majesty's Stationery Office: Department of Health and Social Security (1982) "The Bacteriological Examination of Drinking Water Supplies". Report 71, HMSO, London
ICUMSA	International Commission for Uniform Methods of Sugar Analysis
IDF	International Dairy Federation
IFU	International Federation of Fruit Juice Producers
Internal SOP	Internal Standard Operation Procedure of individual requests
ISO 6222	International Organization for Standardization: Water Quality – Enumeration of culturable micro-organisms
ISO 6579-1981	International Organization for Standardization: Microbiology. General guidance on methods for the detection of Salmonella. Reference method
ISO 7704	International Organization for Standardization: Water Quality, Evaluation of membrane filters used for microbiological analysis
ISO 7899-2	International Organization for Standardization: Water Quality – Detection and enumeration of intestinal enterococci
ISO 8199	International Organization for Standardization: Water Quality – General Guide to the enumeration of micro-organisms by culture
ISO 9308-1	International Organization for Standardization: Water Quality – Detection and enumeration of E. coli and coliform bacteria
EN 12780	European Organization for Standardization: Water Quality – Detection and enumeration of Ps. aeruginosa
JFoodP	Journal of Food Protection
JIBrew	The Journal of the Institute of Brewing
LLL	Method described by Lanaridris& Lafon-Lafourcade
LMBG	Amtliche Sammlung von Untersuchungsverfahren nach dem §35 des Lebensmittel- und Bedarfsgegenständegesetzes des BGA (testing procedures for food stuffs and articles of daily use)
MEBAK	Methodensammlung der Mitteleuropäischen Brauereitechnischen Analysenkommission (methods of the Central European brewery commission)
MNO	Verordnung über natürliches Mineralwasser, Quellwasser und Tafelwasser (Mineral/Table Water Guideline)
MPP	Merkblätter für die Prüfung von Packmitteln (Testing procedures for packaging stuff)
NCA	National Canners Association: A Laboratory manual of the canning industry
USDA	U.S. Department of Agriculture
USP	United States Pharmacopoeia
VLB	Versuchs- und Lehranstalt für Brauerei in Berlin (institute of brewery)
ZenHyg	Zentralblatt für Hygiene (Journal of Hygiene)

DIN standards and the "Amtliche Sammlung von Untersuchungsverfahren nach dem §35 des Lebensmittel- und Bedarfsgegenständegesetzes des BGA" are available through the German publisher Beuth-Verlag, Burggrafenstr. 6, 10787 Berlin

Sales and Service Contacts

For further contacts, visit www.sartorius-stedim.com

Europe

Germany

Sartorius Stedim Biotech GmbH
August-Spindler-Strasse 11
37079 Goettingen

Phone +49.551.308.0
Fax +49.551.308.3289

www.sartorius-stedim.com

Sartorius Stedim Systems GmbH
Schwarzenberger Weg 73-79
34212 Melsungen

Phone +49.5661.71.3400
Fax +49.5661.71.3702

www.sartorius-stedim.com

France

Sartorius Stedim Biotech S.A.
Z.I. des Paluds
Avenue de Jouques – BP 1051
13781 Aubagne Cedex

Phone +33.442.845600
Fax +33.442.845619

Sartorius Stedim France SAS
ZI des Paluds
Avenue de Jouques – CS 71058
13781 Aubagne Cedex

Phone +33.442.845600
Fax +33.442.846545

Austria

Sartorius Stedim Austria GmbH
Franzosengraben 12
A-1030 Vienna

Phone +43.1.7965763.18
Fax +43.1.796576344

Belgium

Sartorius Stedim Belgium N.V.
Leuvensesteenweg, 248/B
1800 Vilvoorde

Phone +32.2.756.06.80
Fax +32.2.756.06.81

Denmark

Sartorius Stedim Nordic A/S
Hoerskaetten 6D, 1.
DK-2630 Taastrup

Phone +45.7023.4400
Fax +45.4630.4030

Italy

Sartorius Stedim Italy S.p.A.
Via dell'Antella, 76/A
50012 Antella-Bagno a Ripoli (FI)

Phone +39.055.63.40.41
Fax +39.055.63.40.526

Netherlands

Sartorius Stedim Netherlands B.V.
Edisonbaan 24
3439 MN Nieuwegein

Phone +31.30.6025080
Fax +31.30.6025099

Spain

Sartorius Stedim Spain SA
C/Isabel Colbrand 10-12,
Planta 4, Oficina 121
Polígono Industrial de Fuencarral
28050 Madrid

Phone +34.91.3586102
Fax +34.91.3588804

Switzerland

Sartorius Stedim Switzerland GmbH
Lerzenstrasse 21
8953 Dietikon

Phone +41.44.741.05.00
Fax +41.44.741.05.09

U.K.

Sartorius Stedim UK Limited
Longmead Business Park
Blenheim Road, Epsom
Surrey KT19 9 QQ

Phone +44.1372.737159
Fax +44.1372.726171

America

USA

Sartorius Stedim North America Inc.
131 Heartland Blvd.
Edgewood, NY 11717

Toll-Free +1.800.368.7178
Fax +1.631.254.4253

Sartorius Stedim SUS Inc.
1910 Mark Court
Concord, CA 94520

Phone +1.925.689.6650
Toll Free +1.800.914.6644
Fax +1.925.689.6988

Sartorius Stedim Systems Inc.
201 South Ingram Mill Road
Springfield, MO 65802

Phone +1.417.873.9636
Fax +1.417.873.9275

Argentina

Sartorius Argentina S.A.
Int. A. Avalos 4251
B1605ECS Munro
Buenos Aires

Phone +54.11.4721.0505
Fax +54.11.4762.2333

Brazil

Sartorius do Brasil Ltda
Av. Dom Pedro I, 241
Bairro Vila Pires
Santo André
São Paulo
Cep 09110-001

Phone +55.11.4451.6226
Fax +55.11.4451.4369

Mexico

Sartorius de México S.A. de C.V.
Circuito Circunvalación Poniente No. 149
Ciudad Satélite
53100 Naucalpan, Estado de México

Phone +52.5555.62.1102
Fax +52.5555.62.2942

Asia | Pacific

China

Sartorius Stedim Beijing
Representative Office
No. 33, Yu'an Road,
Airport Industrial Zone B, Shunyi District
Beijing 101300

Phone +86.10.80426516
Fax +86.10.80426580

Sartorius Stedim Shanghai
Representative Office
Room 618, Tower 1, German Centre,
Shanghai, PRC., 201203

Phone +86.21.28986393
Fax +86.21.28986392.11

Sartorius Stedim Guangzhou Office
Room 704, Broadway Plaza,
No. 233-234 Dong Feng West Road
Guangzhou 510180

Phone +86.20.8351.7921
Fax +86.20.8351.7931

India

Sartorius Stedim India Pvt. Ltd.
10, 6th Main, 3rd Phase Peenya
KIADB Industrial Area
Bangalore – 560 058

Phone +91.80.2839.1963|0461
Fax +91.80.2839.8262

Japan

Sartorius Stedim Japan K.K.
KY Building, 8-11
Kita Shinagawa 1-chome
Shinagawa-ku
Tokyo 140-0001

Phone +81.3.3740.5407
Fax +81.3.3740.5406

Malaysia

Sartorius Stedim Malaysia Sdn. Bhd.
Lot L3-E-3B, Enterprise 4
Technology Park Malaysia
Bukit Jalil
57000 Kuala Lumpur

Phone +60.3.8996.0622
Fax +60.3.8996.0755

Singapore

Sartorius Stedim Singapore Pte. Ltd.
10, Science Park Road, The Alpha
#02-25, Singapore Science Park 2
Singapore 117684

Phone +65.6872.3966
Fax +65.6778.2494

Australia

Sartorius Stedim Australia Pty. Ltd.
Unit 17/104 Ferntree Gully Road
Waverley Business Park
East Oakleigh, Victoria 3166

Phone +61.3.9590.8800
Fax +61.3.9590.8828